



DÜMMEN ORANGE™

*for you*

CUT ASSORTMENT  
2017-18 TRENDS

# 2017-18 TRENDS

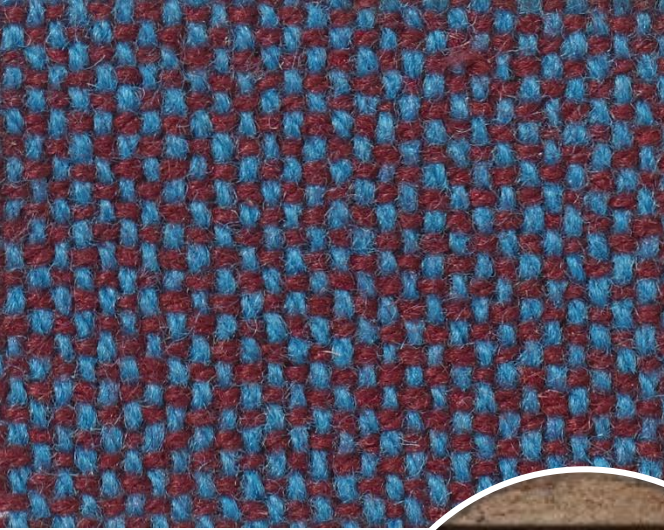
## *Overview*

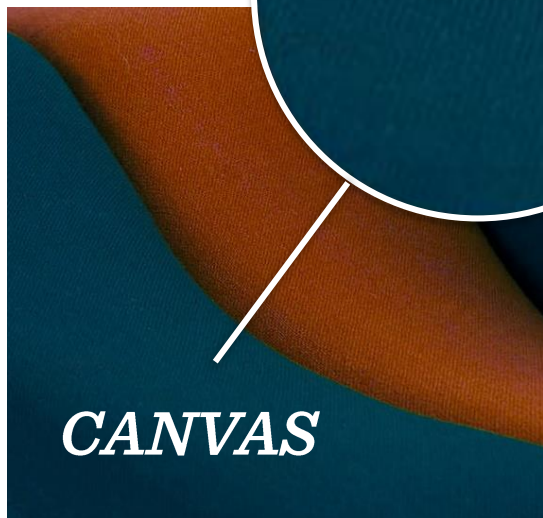
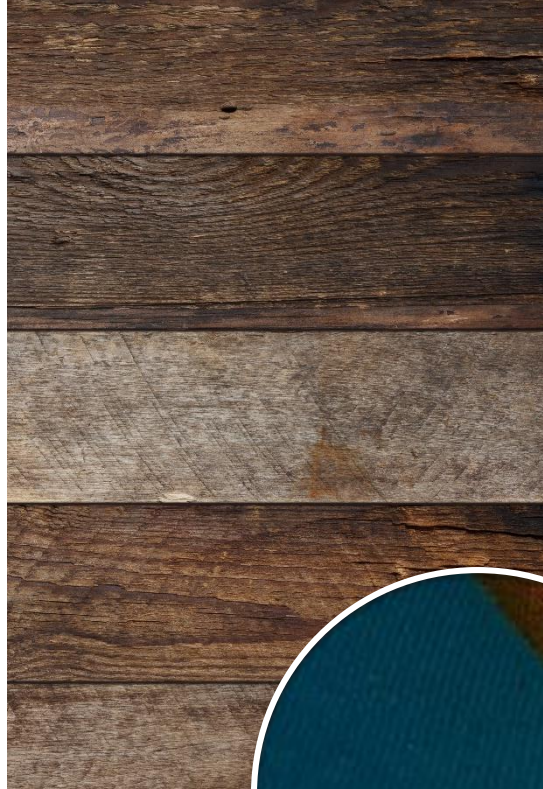
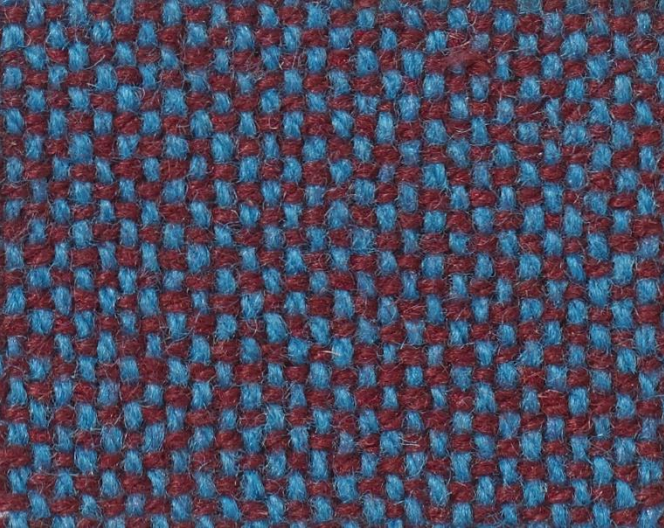
- Forecasted trends support 2017-18 program planning
  - Choose varieties to complement trending color schemes
  - Choose POP material to complement trending colors, patterns, and textures
  - Plan seasonal retail displays that appeal to consumers
- Insights obtained from PANTONEVIEW:
  - Colour Planner Autumn/Winter 2017-18
  - Colour Planner Spring/Summer 2018



**AUTUMN  
2017**

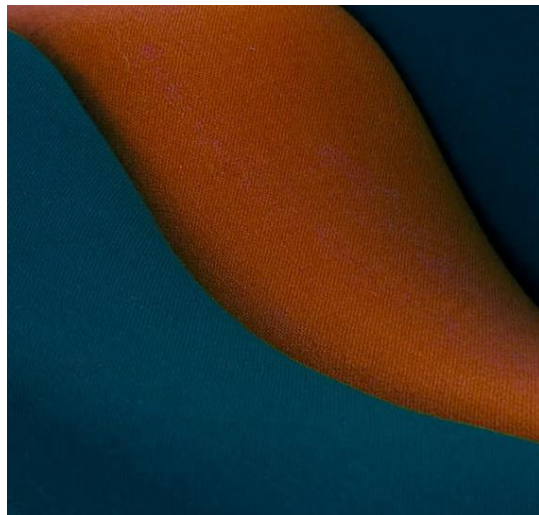
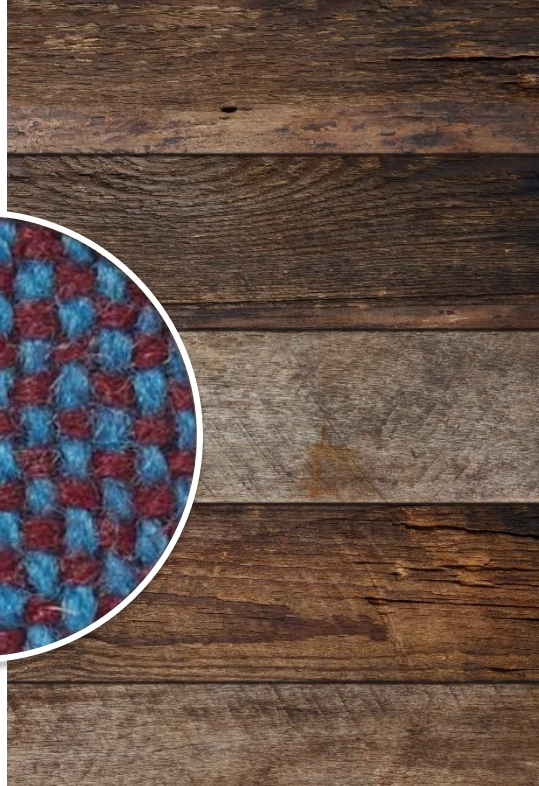
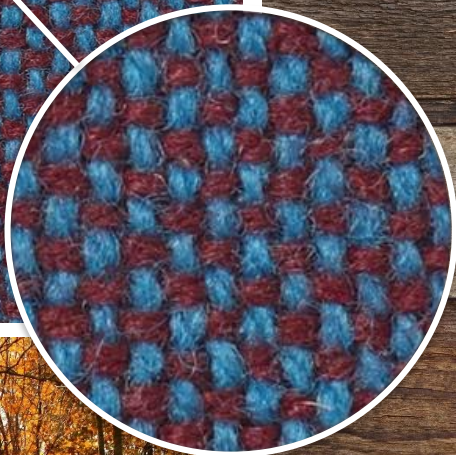
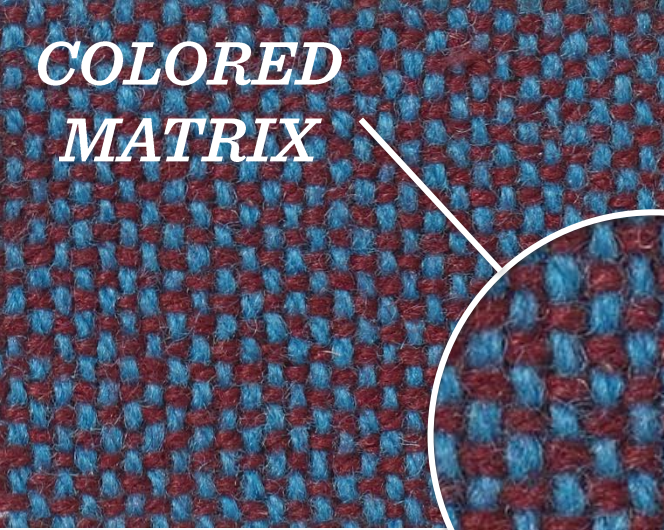


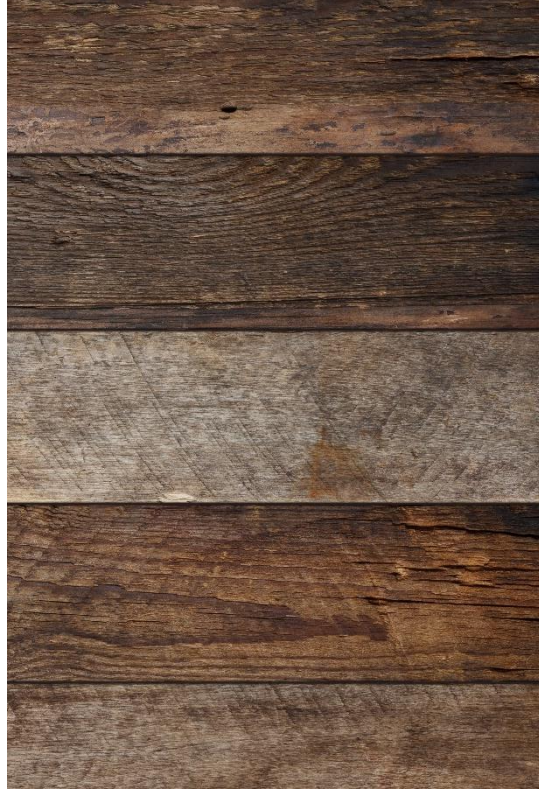
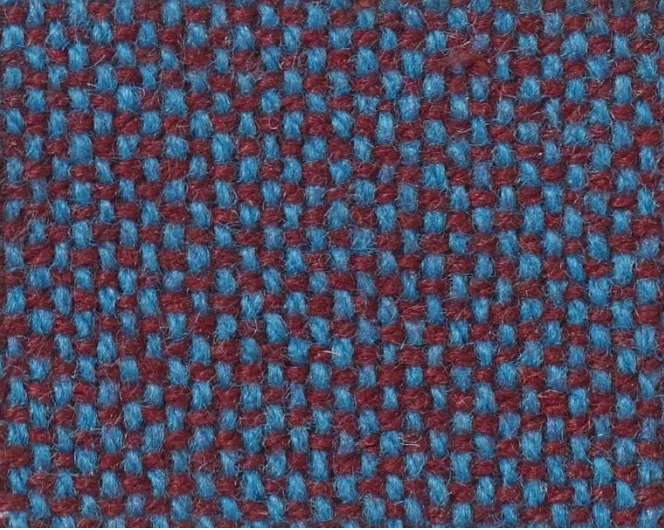




CANVAS

COLORED  
MATRIX





*HERRINGBONE*



# AUTUMN 2017

## *Color trends*

- Core colors
  - Modern earth tones that are adaptable for an urban environment
  - Deep, moody colors create a grounded base
- Secondary colors
  - Muddy taupe creates an alternative, lighter neutral
  - Subdued, warm brights layer in for a unique palette with lasting impact

*Atlantic Deep*

*Rain Drum*

*Brushed Nickel*

*Chili Oil*

*Elmwood*

*Cadmium Yellow*

*Amberglow*

**AUTUMN 2017**

*Chili Pepper* | 66067



**AUTUMN 2017**

*Cheddar* | 66066



**AUTUMN 2017**

*Voldemort | 53144*



**AUTUMN 2017**

*Belen | 17251*



**AUTUMN 2017**

*Carpe Diem+ | 79305*



**AUTUMN 2017**

*Zenit | 17128*



**AUTUMN 2017**

*Terra Orange County | 53216*





# AUTUMN 2017

*A complete color palette*



Belen  
17251



Voldemort  
53144



Chili Pepper  
66067



Cheddar  
66066



Carpe Diem+  
79305



Zenit  
17128



Terra Orange County  
53216





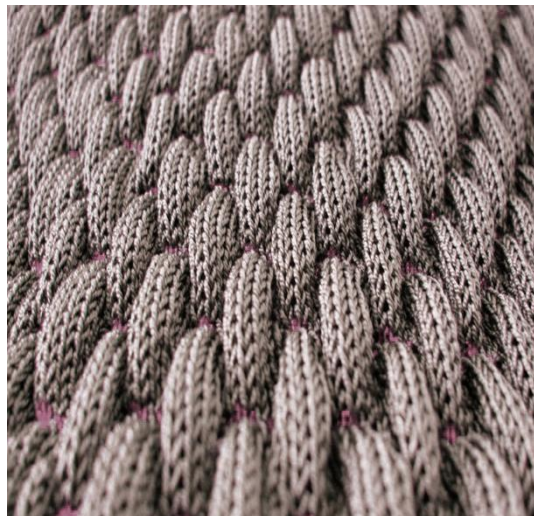
**WINTER  
2017-18**

# WINTER 2017-18

## *TACTILE | NEUTRAL | WEIGHTED*

- Materials & textures
  - Soft mixed with hard
  - Pleated
  - Gold accents
  - Black snakeskin
  - Granular & cracked
  - Rough matte
- Patterns & forms
  - Tailored asymmetry
  - Neat edges & flat planes
  - Large-scale knit
  - Metal edging
  - Soft geometry
  - Marbled







*LARGE-SCALE  
KNITS*





*GOLD ACCENTS*

*CRACKED  
TEXTURE*



# WINTER 2017-18

## *Color trends*

- Core colors
  - Ghostly neutrals of whites and greys provide a crisp backdrop
  - Off-black is also dominant, providing depth and contrast
- Secondary colors
  - Metallic gold offers a rich, warm contrast to the cool-toned core colors
  - Mauve and pale pink softly complement the stark tones of the core palette

*White Alyssum*

*Quiet Grey*

*Brushed Nickel*

*Espresso*

*Pale Gold*

*Elderberry*

*Amberlight*



**WINTER 2017-18**

*Sweet Avalanche+ | 79301*



**WINTER 2017-18**

*Sumatra | 17153*



**WINTER 2017-18**

*Lynx | 66164*



**WINTER 2017-18**

*Sweet Mocha | 17222*



**WINTER 2017-18**

*Maisy | 66074*



**WINTER 2017-18**

*Safi+ | 79346*



**WINTER 2017-18**

*Novia* | 17054



# WINTER 2017-18

*A complete color palette*



Sweet Avalanche+  
79301



Sumatra  
17153



Lynx  
66164



Sweet Mocha  
17222

Maisy  
66074



Safi+  
79346



Novia  
17054







**SPRING  
2018**

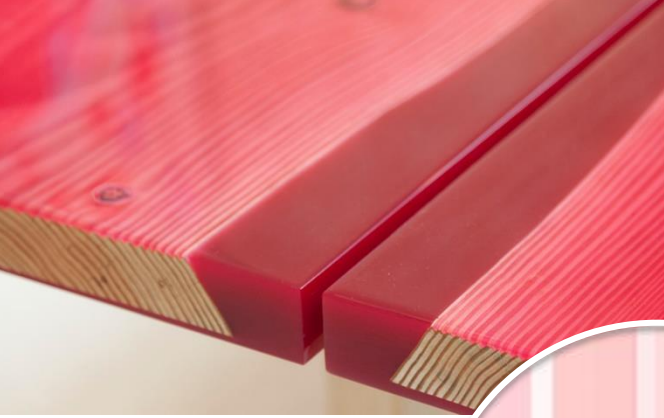
# SPRING 2018

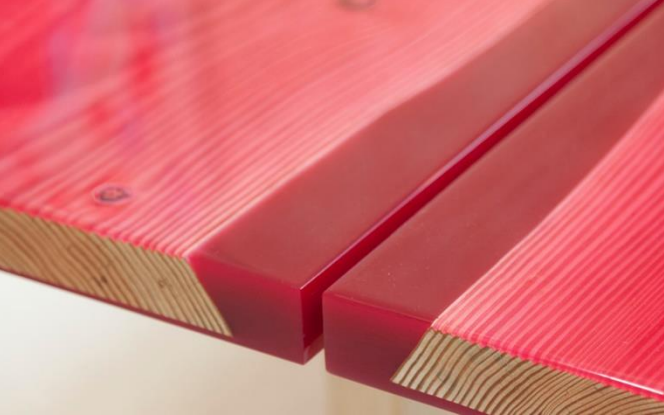
## *SIMPLE | CLEAN | CONTEMPORARY*

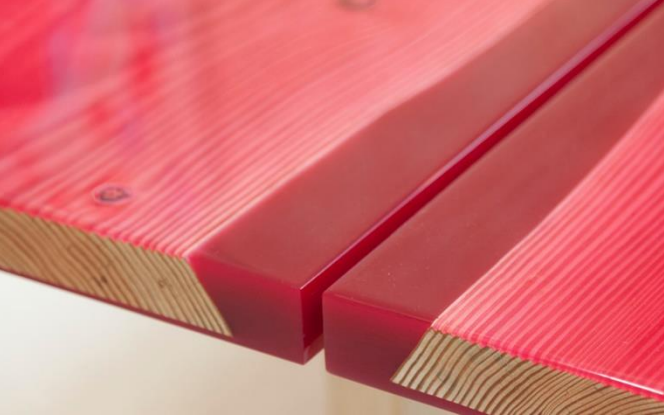
- Materials & textures
  - Glazed against unglazed
  - Dipped & tipped
- Patterns & forms
  - Tonal stripes
  - Pristine shapes
  - Blocked color
  - Contemporary
  - Clean & simple



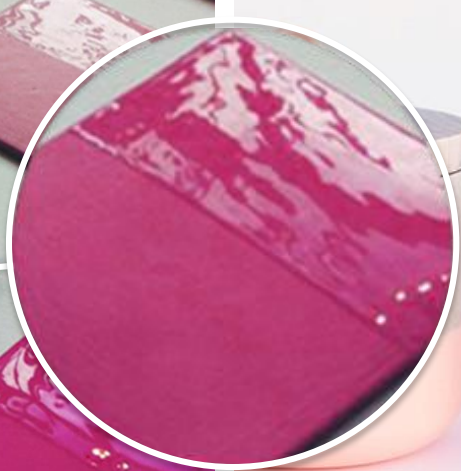
# TONAL STRIPES







*GLAZED /  
UNGLAZED*





# SPRING 2018

## *Color trends*

- Core colors
  - Pale neutrals create a calm respite in the palette
  - Intense, saturated pinks make a standalone impact or can be mixed for a memorable tone-on-tone effect
- Secondary colors
  - Addition of coral tones transforms palette into a modern statement
  - Mid-tone pink creates additional tone-on-tone possibilities

*Blanc de Blanc*

*Pearl*

*Pink Peacock*

*Baton Rouge*

*Coral*

*Strawberry Cream*

*Fusion Coral*

**SPRING 2018**

*Balsas* | 66001





**SPRING 2018**

*Fascination* | 53009



**SPRING 2018**

*Miss Anna's Eyes / 80188*



**SPRING 2018**

*Mohave | 17147*



**SPRING 2018**

*Germini® Residence | 53148*



**SPRING 2018**

*Hermosa+ | 79334*



**SPRING 2018**

*Peach Avalanche+ | 79304*



# SPRING 2018

## *A complete color palette*



Miss Anna's Eyes  
80188



Residence  
53148



Fascination  
53009



Balsas  
66001



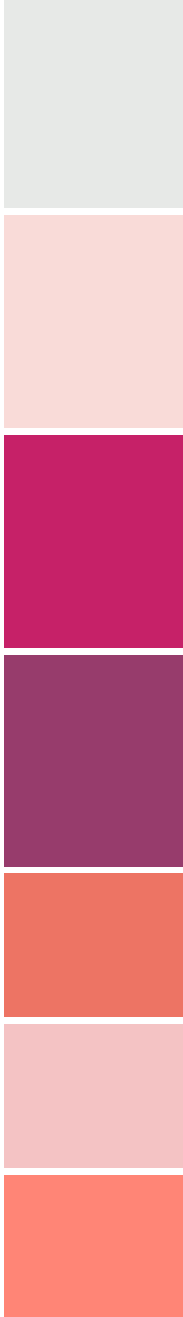
Mohave  
17147



Hermosa+  
79334



Peach Avalanche+  
79304





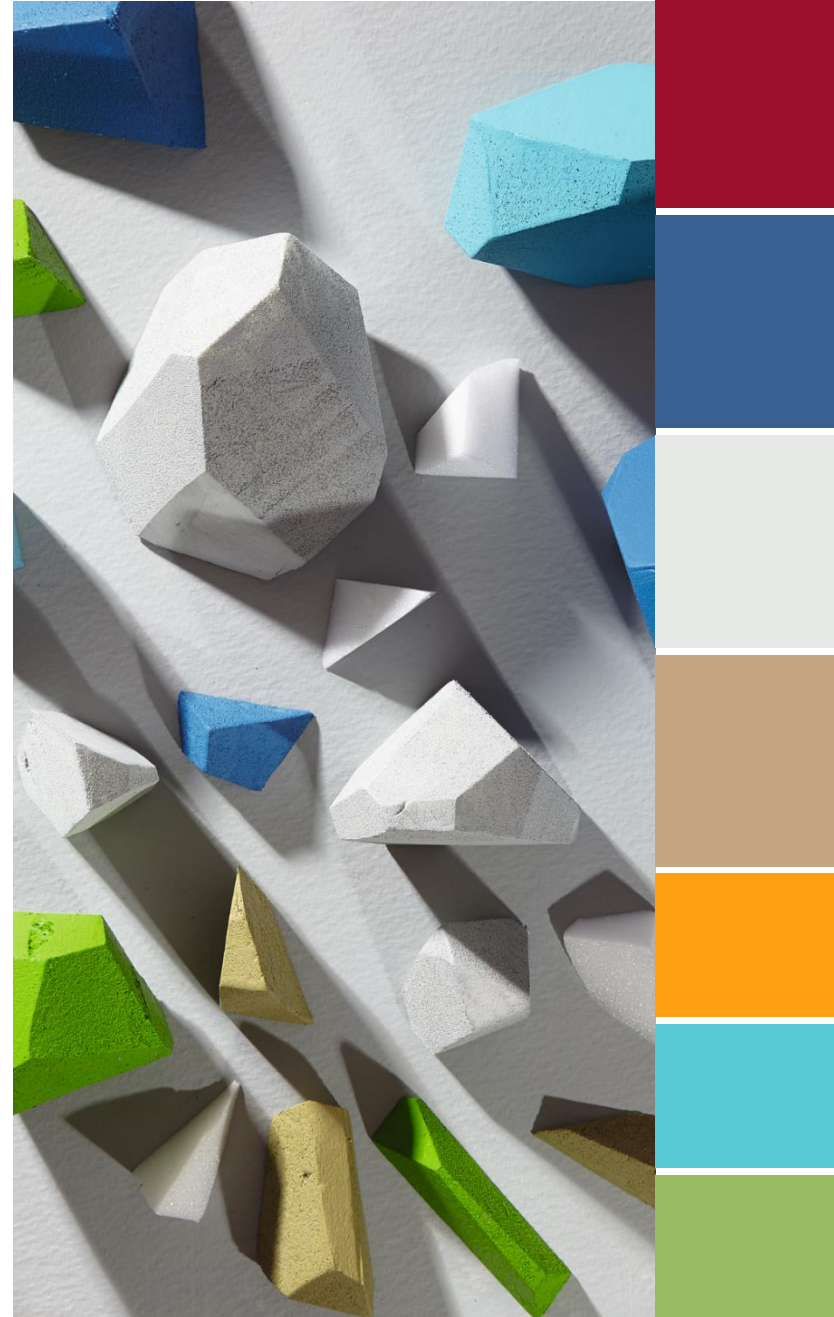
**SUMMER  
2018**

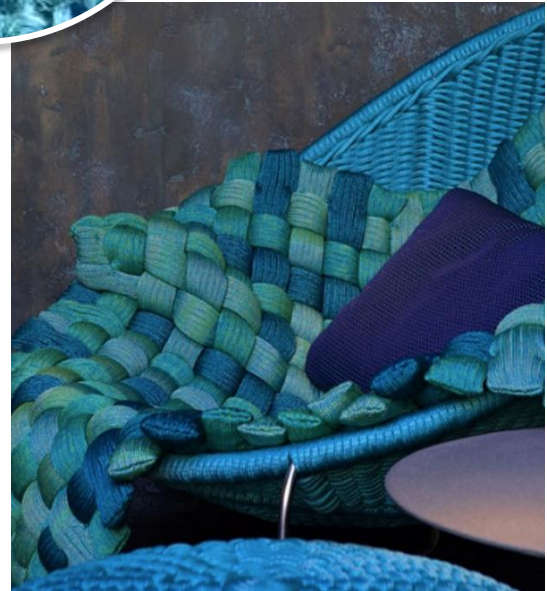
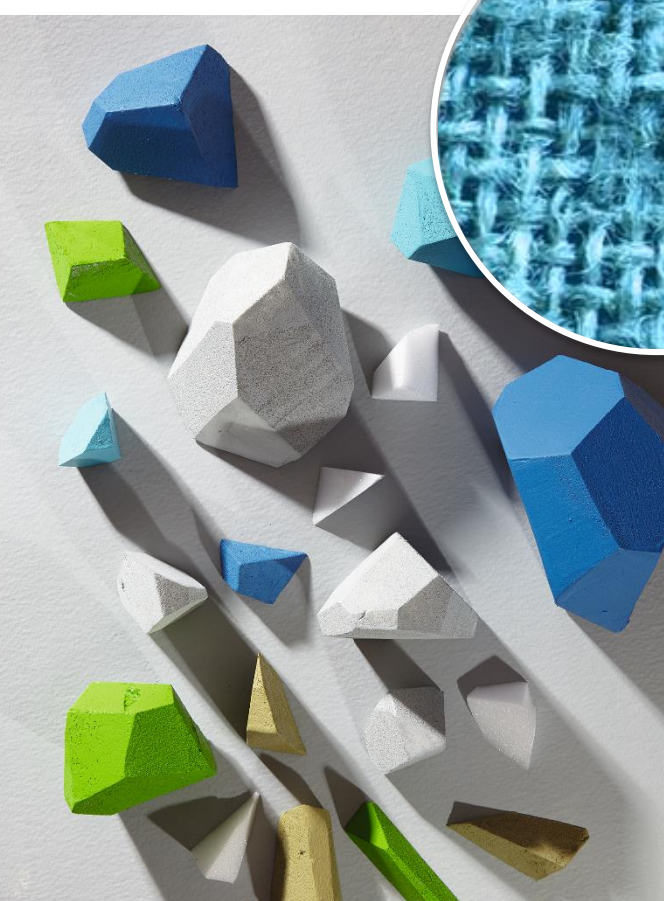
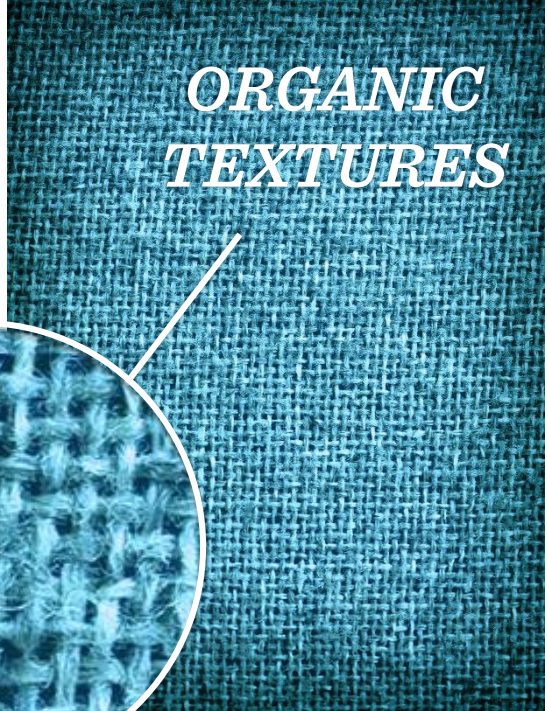


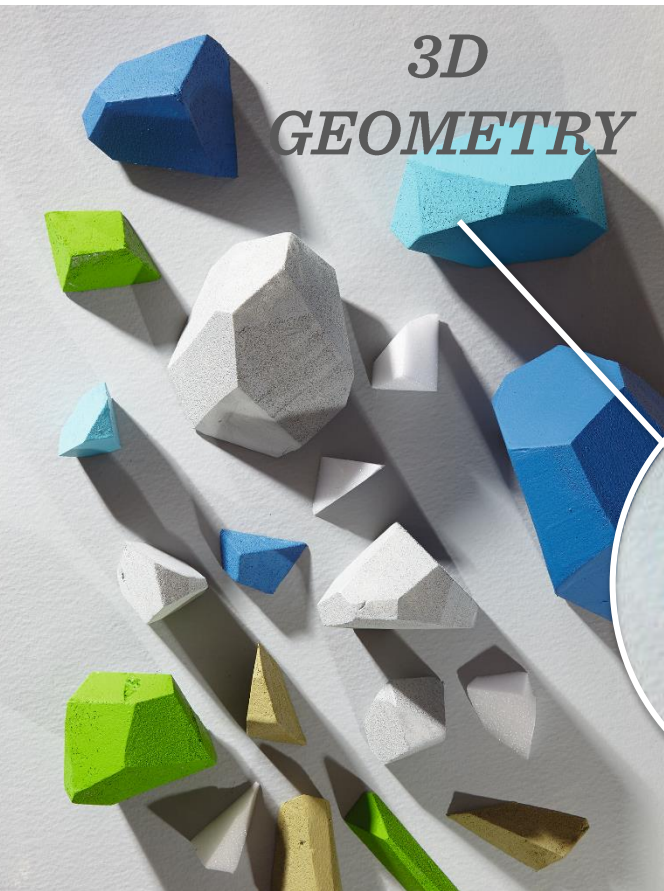
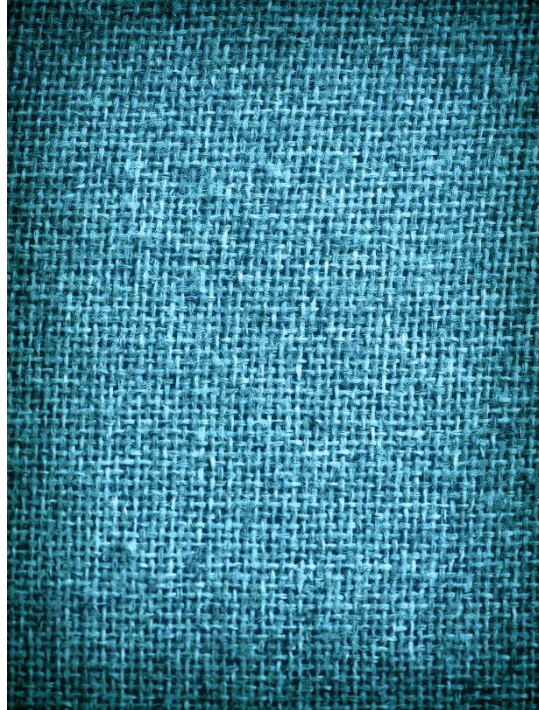
# SUMMER 2018

*BRIGHT | ENERGETIC |  
CONTRASTING*

- Materials & textures
  - Organic & crumb textures
  - Matte plastics
  - Edged with color
  - Sleek synthetic
  - Enlarged weave
- Patterns & forms
  - Natural forms
  - Magnified scale
  - Hand blown
  - Sparkling & luminous
  - Layered contrasts
  - 3D geometry

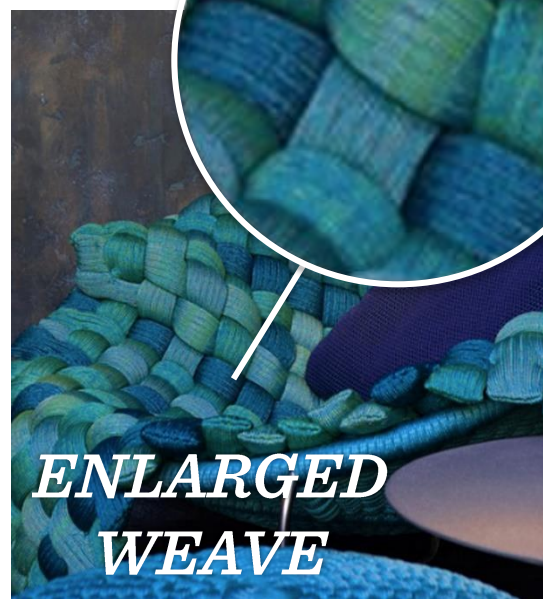






*CRUMB  
TEXTURE*





*ENLARGED  
WEAVE*

# SUMMER 2018

## *Color trends*

- Core colors
  - Heavily pigmented red and blue form a strong base
  - Clear white and warm neutral provide balance to base palette
- Secondary colors
  - Warm apricot adds a jolt of unexpected color
  - Clear, cool green & blue layer in a fresh & vibrant energy

*Jester Red*

*Star Sapphire*

*Blanc de Blanc*

*Latte*

*Zinnia*

*Blue Radiance*

*Bright Lime Green*

SUMMER 2018

*HotRod | 65157*



**SUMMER 2018**

*Coconut* | 66068





**SUMMER 2018**

*Terra Marley | 53182*



**SUMMER 2018**

*White Soda+ | 79438*



**SUMMER 2018**

*Germini® Rayban | 53262*



**SUMMER 2018**

*Undercover | 79675*



**SUMMER 2018**

*Hipster Lime / 80781*



# SUMMER 2018

*A complete color palette*



HotRod  
65157



Coconut  
66068



Terra Marley  
53182



Hipster Lime  
80781

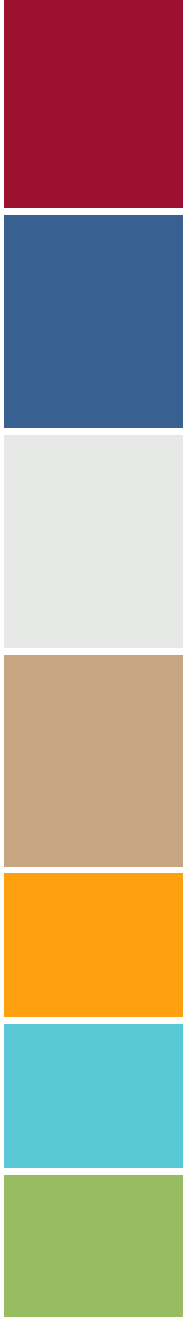
White Soda  
79438+



Rayban  
53262



Undercover  
79675



for you